

[®]
GAMAJET



Mobile CIP Systems

Conceptualized, Designed, Engineered and
Manufactured by:

Gamajet Cleaning Systems: The Tank Cleaning Experts

GAMAJET®

Update your Process, Not your Plant.

You do NOT need an expensive CIP system to clean your tanks.

When cleaning tanks, the solution starts with the tank, not your plant infrastructure. With a Gamajet cleaning machine, your tanks will be cleaned in the most efficient, effective and verifiable manner. To support this revolutionary technology, you do not need to install an expensive CIP cleaning system and incur all of the infrastructure costs associated with installation and plumbing.

Gamajet's MCIP series provides optimal cleaning performance by delivering the required pressure and flow for efficient tank cleaning at a fraction of the cost. Each system is tailored for your specific needs, based on your tank cleaning application. Cleaning tanks begins with choosing the proper tank cleaning machine(s). Therefore designing a CIP system needs follow the selection of the appropriate tank cleaning method, not the other way around. Providing the proper CIP system to power the Gamajet will guarantee an efficient and thorough cleaning process for your tank cleaning requirements. As tank cleaning specialists with over 50 years experience in tank cleaning, Gamajet can provide you with the best tank cleaning solution from start to finish.

Gamajet will work with you conceptualize, design and build a system that is:

- Affordable
- Portable
- Non-Intrusive to your Plant Infrastructure
- Designed around your Tank Cleaning Needs
- Efficient and Effective
- Validatable



Designing the Appropriate MCIP System begins with “sizing” the right Gamajet Tank Cleaning Machine for your Application.

Designing the appropriate MCIP (Mobile Clean-in-Place) system begins with the sizing of the appropriate tank cleaning machine. Our tank cleaning experts work with you to select the most efficient and effective cleaning machine based on your unique application. Once the cleaning device is selected, and a tank cleaning procedure is defined, designing and sizing a proper MCIP system to support the Gamajet is the next phase. Each Gamajet MCIP system begins with a standard model, based on the complexity of the application. Once the model type is selected, additional features are added to customize the system to your specific needs. Designed together, the end result is a unique mobile cleaning system for your application. The comprehensive matrix shown below defines the standard features for each MCIP system model. Additional features such as multiple storage tanks, unique filtration, rapid heating of wash fluid or multiple saved cleaning programs for each vessel can then be added to the model. Regardless of the tank cleaning application, Gamajet can provide an engineered solution.

1. Understand Process and Cleaning Requirements
2. Conceptualize the Most Efficient and Effective Solution
3. Size a Gamajet Machine for the Application
4. Select Gamajet MCIP Model Type to Customize
5. Select/Add additional Features
6. Engineer/Design the System
7. Build the CIP System
8. Clean Better, and Faster.

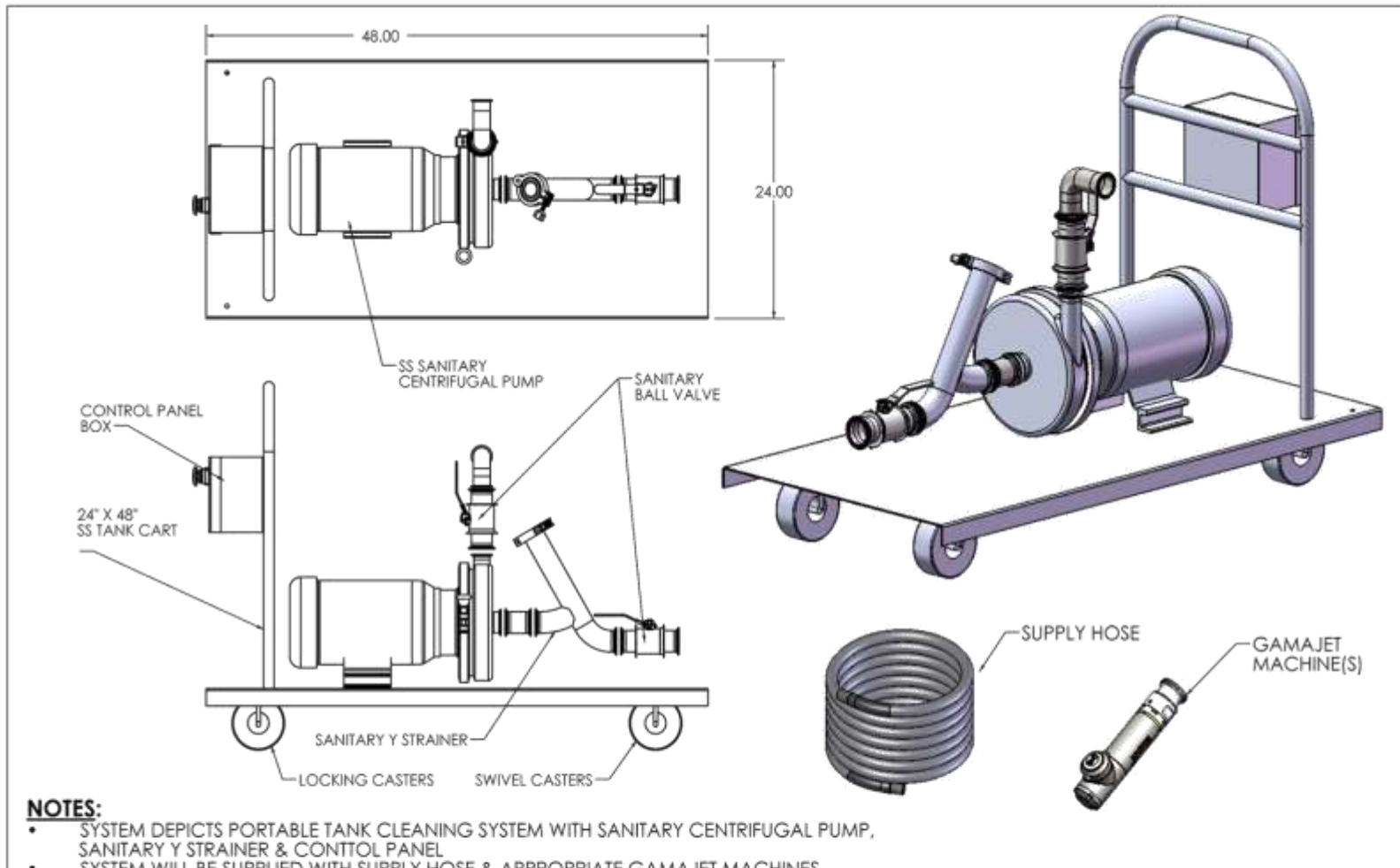


Gamajet MCIP Model Types

Sani	Sanitary Pump, Filter and Control Panel on Stainless Steel Cart
Sani-H	Sanitary Pump, Holding Tank, Filter and Control Panel Mounted on Stainless Steel Cart
Sani-D	Sanitary Pump, Dosing Pump with Reservoir(s) (or Venturi), Filter and Control Panel Mounted on Stainless Steel Cart
Sani-DH	Sanitary Pump, Dosing Pump with Reservoir(s) (or Venturi), Holding Tank, Filter and Control Panel Mounted on Stainless Steel Cart
VM	Vertical Multi-Stage Pump, Filter and Control Panel on Stainless Steel Cart
VM-H	Vertical Multi-Stage Pump, Holding Tanks, Filter and Control Panel on Stainless Steel Cart
VM-D	Vertical Multi-Stage Pump, Dosing Pump with Reservoir(s) (or Venturi), Filter and Control Panel on Stainless Steel Cart
VM-DH	Vertical Multi-Stage Pump, Dosing Pump with Reservoir(s) (or Venturi), Holding Tank, Filter and Control Panel on Stainless Steel Cart
Opti	Full System. Individually Quoted

SANI MCIP

Sanitary Pump, Filter, Control Panel and Stainless Steel Cart



NOTES:

- SYSTEM DEPICTS PORTABLE TANK CLEANING SYSTEM WITH SANITARY CENTRIFUGAL PUMP, SANITARY Y STRAINER & CONTROL PANEL
- SYSTEM WILL BE SUPPLIED WITH SUPPLY HOSE & APPROPRIATE GAMAJET MACHINES
- SS TUBING WITH SANITARY QUICK CLAMP CONNECTIONS WILL BE USED FOR ASSEMBLING THE SYSTEM

THIS DRAWING IS THE PROPERTY OF GAMAJET CLEANING SYSTEMS, INC. REPRODUCTIONS AND USE OTHER THAN BORROWER'S AGREEMENT IS PROHIBITED. THIS DOCUMENT SHALL NOT BE LENT OR DISPOSED OF DIRECTLY OR INDIRECTLY NOR USED FOR ANY PURPOSE OTHER THAN THAT WHICH IS SPECIFICALLY FURNISHED.

DRAWN	DATE	Rev.	Description
SAM	02/17/10	1	New Drawing
SAM	02/18/10	2	Updated the Notes section

<small>UNLESS OTHERWISE SPECIFIED</small> <small>* DIMENSIONS ARE IN INCHES</small> <small>* ALL WELDS TO BE TIG</small> <small>* GRIND SMOOTH AND SAND</small> <small>* NO BURRS, NO SHARP EDGES</small> <small>* FILLET RAD.: 0.015</small> <small>* TOLERANCES:</small> <small>XX ± 1/8"</small> <small>ANGLE ±3°</small>		GAMAJET CLEANING SYSTEMS, INC. 604 Jeffers Circle Exton, PA 19341	
MATERIAL: 304 SS		TITLE: PTCS - SANITARY	
FINISH (UNLESS OTHERWISE SPECIFIED): 125 Ra		EQUIPMENT: CONCEPT DRAWING	
SCALE: Full		DWG. NO.: PTCS 1003	SHEET 1 OF 1

GAMAJET[®]

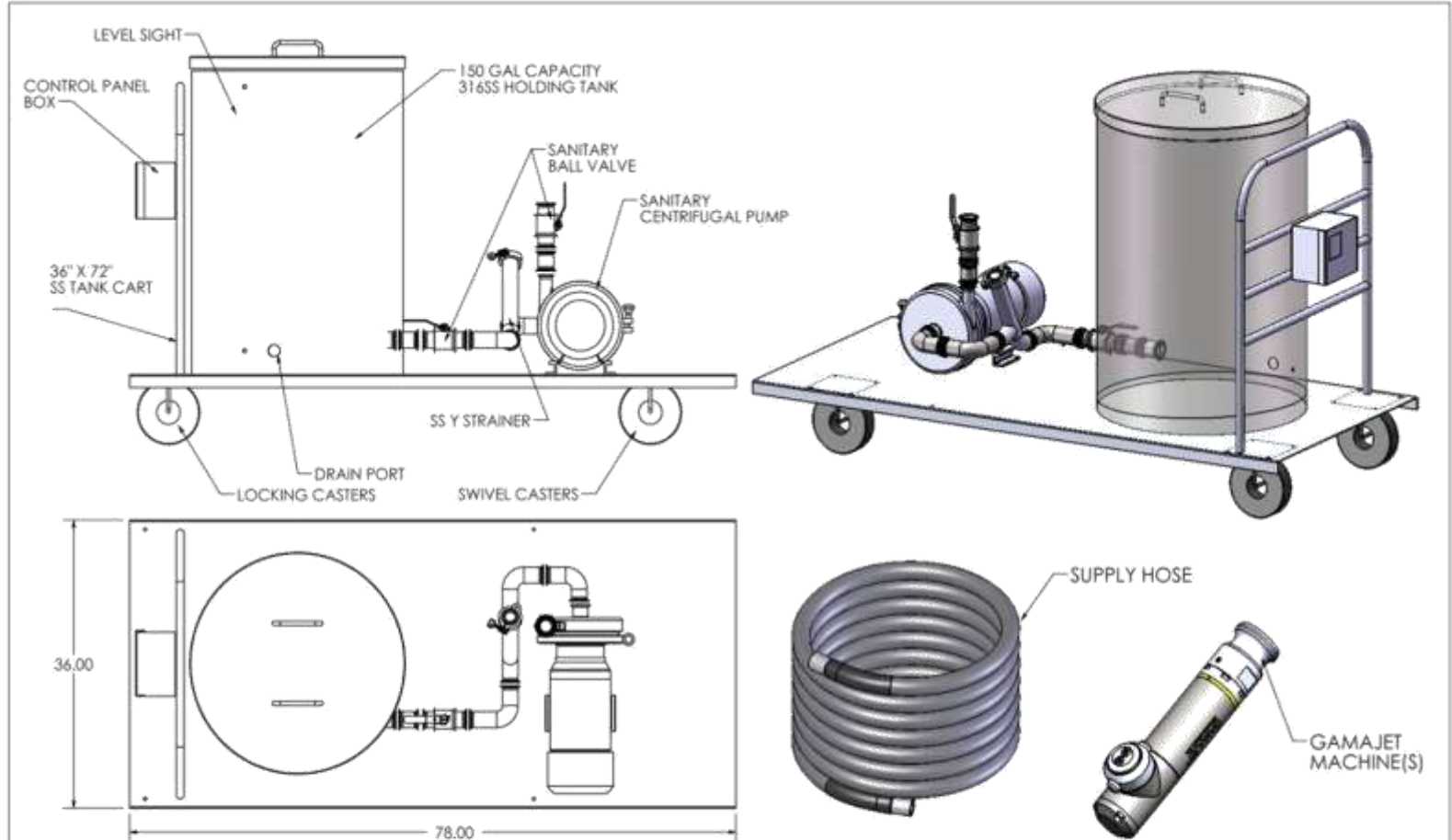
SANI MCIP

Sanitary Pump, Filter, Control Panel and
Stainless Steel Cart



SANI-H MCIP

Sanitary Pump, Holding Tank, Filter, Control Panel and Stainless Steel Cart



NOTES:

- SYSTEM DEPICTS PORTABLE TANK CLEANING SYSTEM WITH HOLDING TANK SANITARY CENTRIFUGAL PUMP, SANITARY Y STRAINER & CONTROL PANEL
- SYSTEM WILL BE SUPPLIED WITH SUPPLY HOSE & APPROPRIATE GAMAJET MACHINES
- SS TUBING WITH SANITARY QUICK CLAMP CONNECTIONS WILL BE USED FOR ASSEMBLING THE SYSTEM

THIS DRAWING IS THE PROPERTY OF GAMAJET CLEANING SYSTEMS, INC. REPRODUCTIONS AND USE OTHER THAN BORROWER'S AGREEMENT IS PROHIBITED. THIS DOCUMENT SHALL NOT BE LENT OR DISPOSED OF DIRECTLY OR INDIRECTLY NOR USED FOR ANY PURPOSE OTHER THAN THAT WHICH IS SPECIFICALLY FURNISHED.

DRAWN	DATE	Rev.	Description
SAM	02/18/10	1	New Drawing

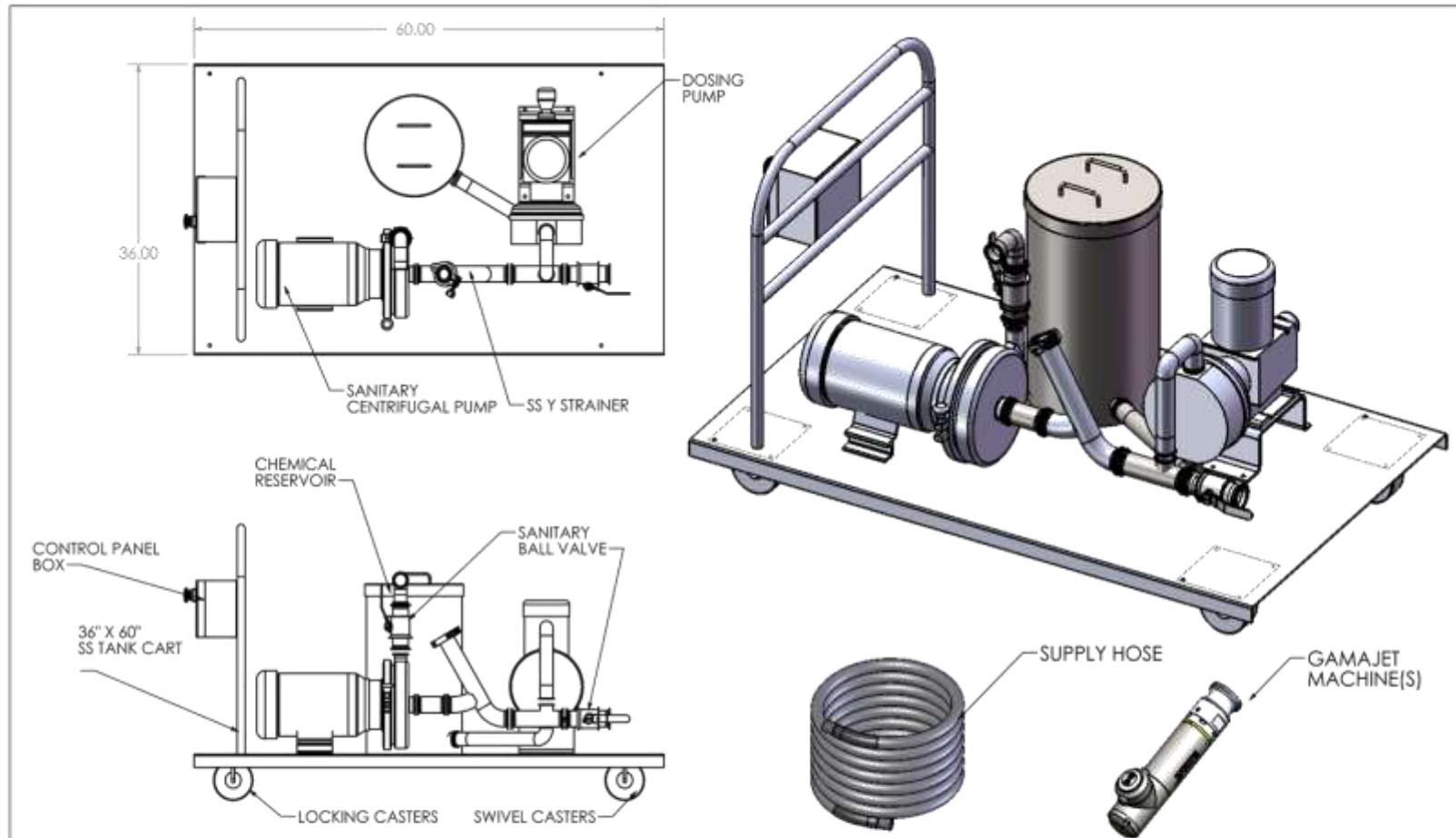
UNLESS OTHERWISE SPECIFIED
 * DIMENSIONS ARE IN INCHES
 * ALL WELDS TO BE TIG
 * GRIND SMOOTH AND SAND
 * NO BURRS, NO SHARP EDGES
 * FILLET RAD.: 0.035
 * TOLERANCES:
 .XX ±1/8"
 ANGLE ±3°

MATERIAL:
 304/316 SS
 FINISH (UNLESS OTHERWISE SPECIFIED):
 125 Ra
 SCALE: Full

GAMAJET CLEANING SYSTEMS, INC.	
604 Jeffers Circle Exton, PA 19341	
TITLE	PTCS - CART WITH HOLDING TANK
EQUIPMENT	CONCEPT DRAWING
DWG. NO.	PTCS 1004
	SHEET 1 OF 1

SANI-D MCIP

Sanitary Pump, Dosing Pump with Reservoir, Filter, Control Panel and Stainless Steel Cart



NOTES:

- SYSTEM DEPICTS PORTABLE TANK CLEANING SYSTEM WITH SANITARY CENTRIFUGAL PUMP, DOSING PUMP, SANITARY Y STRAINER & CONTROL PANEL
- SYSTEM WILL BE SUPPLIED WITH SUPPLY HOSE & APPROPRIATE GAMAJET MACHINES
- SYSTEM CONSISTS OF ONE CHEMICAL RESERVOIR
- SS TUBING WITH SANITARY CLAMP CONNECTIONS WILL BE USED FOR ASSEMBLING THE SYSTEM

THIS DRAWING IS THE PROPERTY OF GAMAJET CLEANING SYSTEMS, INC. REPRODUCTIONS AND USE OTHER THAN BORROWER'S AGREEMENT IS PROHIBITED. THIS DOCUMENT SHALL NOT BE LENT OR DISPOSED OF DIRECTLY OR INDIRECTLY NOR USED FOR ANY PURPOSE OTHER THAN THAT WHICH IS SPECIFICALLY FURNISHED.

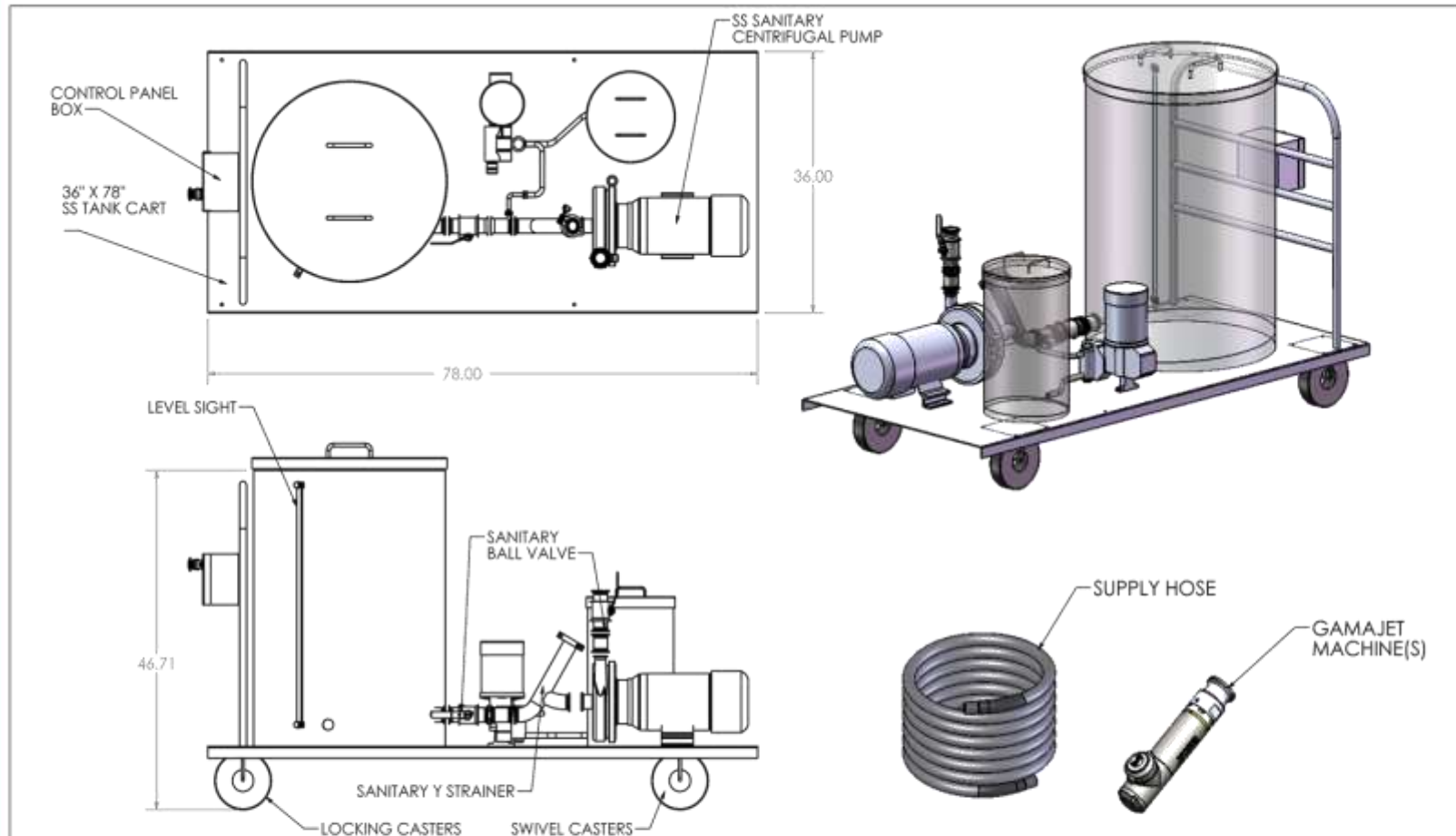
DRAWN	DATE	Rev.	Description
SAM	03/10/10	1	New Drawing

UNLESS OTHERWISE SPECIFIED * DIMENSIONS ARE IN INCHES * ALL WELDS TO BE TIG * GRIND SMOOTH AND SAND * NO BURRS, NO SHARP EDGES * FILLET RAD.: 0.015 * TOLERANCES: .XX ± 1/8" ANGLE ± 3°
MATERIAL: 304/316
FINISH (UNLESS OTHERWISE SPECIFIED): 125 Ra
SCALE: Full

GAMAJET CLEANING SYSTEMS, INC. 604 Jeffers Circle Exton, PA 19341	
TITLE CONCEPT DRAWING - 1005	
EQUIPMENT PTCS WITH TWO PUMPS	DWG. NO. PTCS 1005
SHEET 1 OF 1	

SANI-DH MCIP

Sanitary Pump, Dosing Pump with Reservoir, Holding Tank, Filter, Control Panel and Stainless Steel Cart



NOTES:

- SYSTEM DEPICTS PORTABLE TANK CLEANING SYSTEM WITH SANITARY CENTRIFUGAL PUMP, DOSING PUMP, SANITARY Y STRAINER & CONTROL PANEL
- SYSTEM WILL BE SUPPLIED WITH SUPPLY HOSE & APPROPRIATE GAMAJET MACHINES
- SYSTEM CONSISTS OF TWO RESERVOIRS - CHEMICAL RESERVOIR & WATER TANK
- SS TUBING WITH SANITARY QUICK CLAMP CONNECTIONS WILL BE USED FOR ASSEMBLING THE SYSTEM

UNLESS OTHERWISE SPECIFIED
 * DIMENSIONS ARE IN INCHES
 * ALL WELDS TO BE TIG
 * GRIND SMOOTH AND SAND
 * NO BURRS, NO SHARP EDGES
 * FILLET RAD.: 0.015
 * TOLERANCES:
 .XX ± 1/8"
 ANGLE ± 3°

GAMAJET CLEANING SYSTEMS, INC.

604 Jeffers Circle
 Exton, PA 19341

THIS DRAWING IS THE PROPERTY OF GAMAJET CLEANING SYSTEMS, INC. REPRODUCTIONS AND USE OTHER THAN BORROWER'S AGREEMENT IS PROHIBITED. THIS DOCUMENT SHALL NOT BE LENT OR DISPOSED OF DIRECTLY OR INDIRECTLY NOR USED FOR ANY PURPOSE OTHER THAN THAT WHICH IS SPECIFICALLY FURNISHED.

DRAWN	DATE	Rev.	Description
SAM	03/08/10	1	New Drawing

MATERIAL:	304/316 SS
FINISH (UNLESS OTHERWISE SPECIFIED):	125 Ra
SCALE:	Full

TITLE	CONCEPT DRAWING - PTCS 1002	
EQUIPMENT	PTCS WITH TWO HOLDING TANKS	
DWG. NO.	PTCS 1002	SHEET 1 OF 1

[®]
GAMAJET

SANI-DH MCIP

Sanitary Pump, Dosing Pump with
Reservoir, Holding Tank, Filter, Control
Panel and Stainless Steel Cart

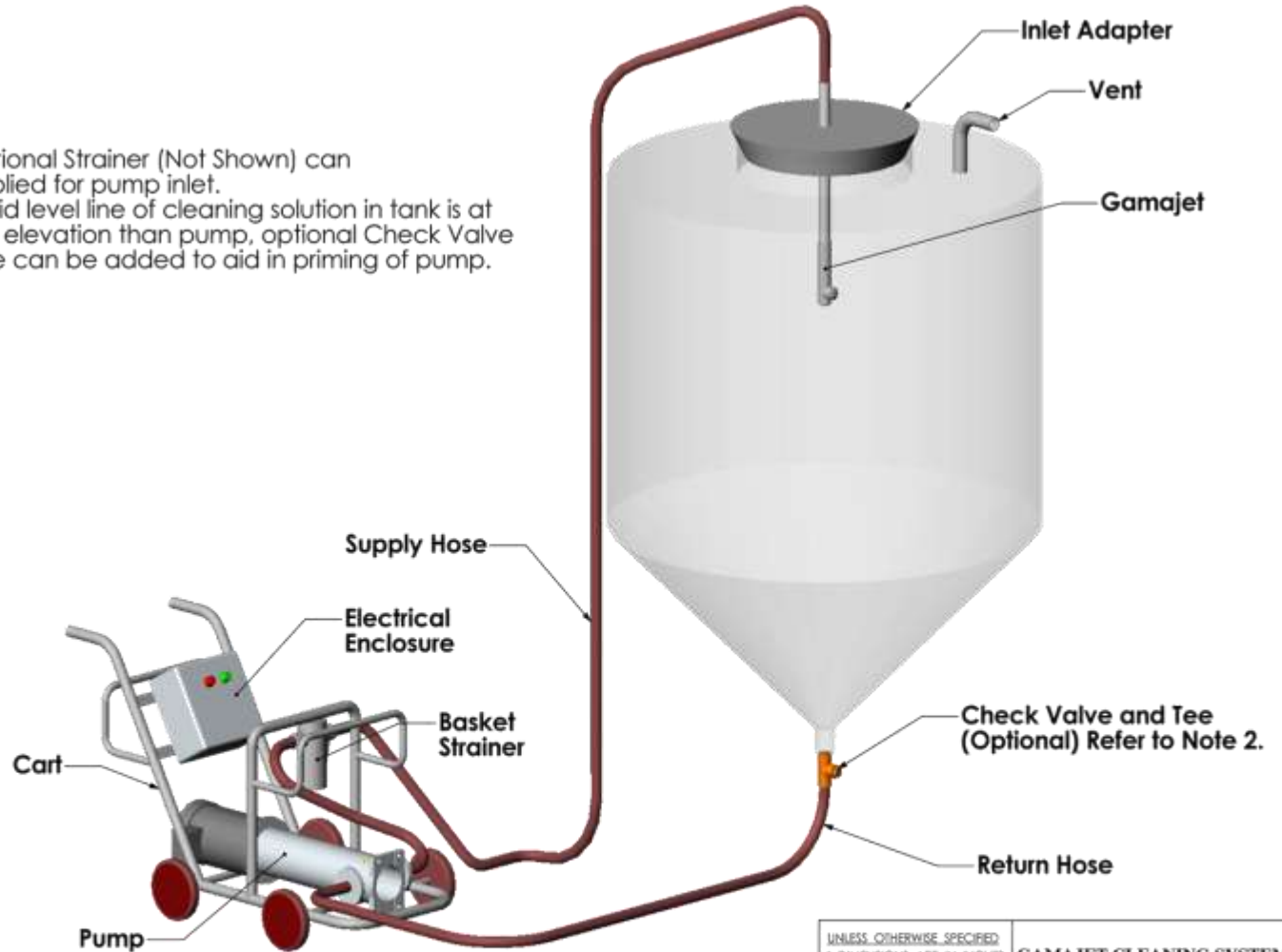


VM MCIP

Vertical Multistage Pump, Filter, Control Panel

Notes:

- 1) Additional Strainer (Not Shown) can be supplied for pump inlet.
- 2) If liquid level line of cleaning solution in tank is at a lower elevation than pump, optional Check Valve and Tee can be added to aid in priming of pump.



THIS DRAWING IS THE PROPERTY OF GAMAJET CLEANING SYSTEMS, INC. REPRODUCTIONS AND USE OTHER THAN BORROWER'S AGREEMENT IS PROHIBITED. THIS DOCUMENT SHALL NOT BE LENT OR DISPOSED OF DIRECTLY OR INDIRECTLY NOR USED FOR ANY PURPOSE OTHER THAN THAT WHICH IS SPECIFICALLY FURNISHED.

DRAWN	DATE	Rev.	Description
BFG	08/01/03	1	New Drawing
BFG	08/20/03	2	Added Electrical Enclosure, Vent, Notes and optional Priming Equipment.

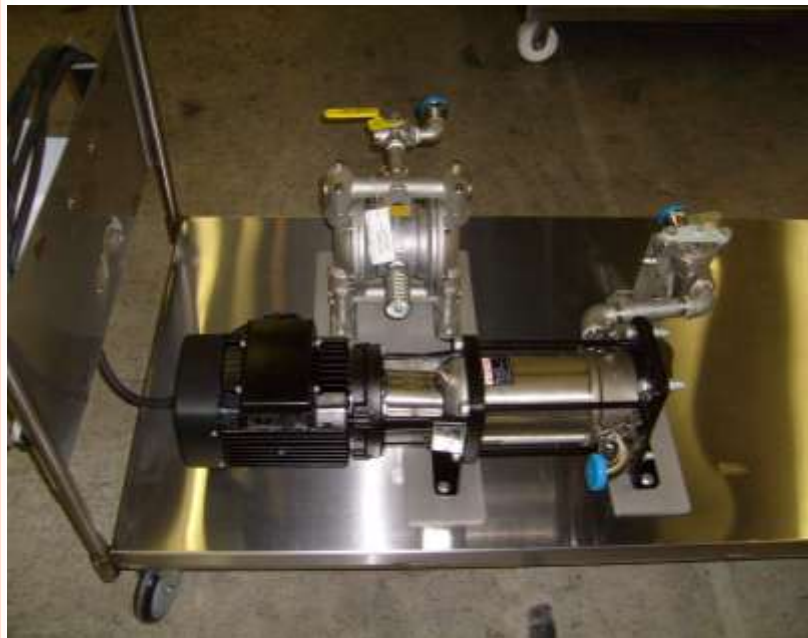
UNLESS OTHERWISE SPECIFIED	
• DIMENSIONS ARE IN INCHES	
• [] DIMENSIONS ARE mm	
• DEBURR ALL SURFACES	
• FILLET RAD: 0.015	
• TOLERANCES:	
.XX ±0.01	
.XXX ±0.005	
ANGLE ±1°	
MATERIAL:	Material
FINISH (UNLESS OTHERWISE SPECIFIED):	?? Ra
SCALE:	Full

GAMAJET CLEANING SYSTEMS, INC.	
604 Jeffers Circle Exton, PA 19341	
TITLE	Portable Tank Cleaning System
EQUIPMENT	Equipment
DWG. NO.	---
	SHEET 1 OF 1

GAMAJET[®]

VM MCIP

Vertical Multistage Pump, Filter, Control Panel and Stainless Steel Cart



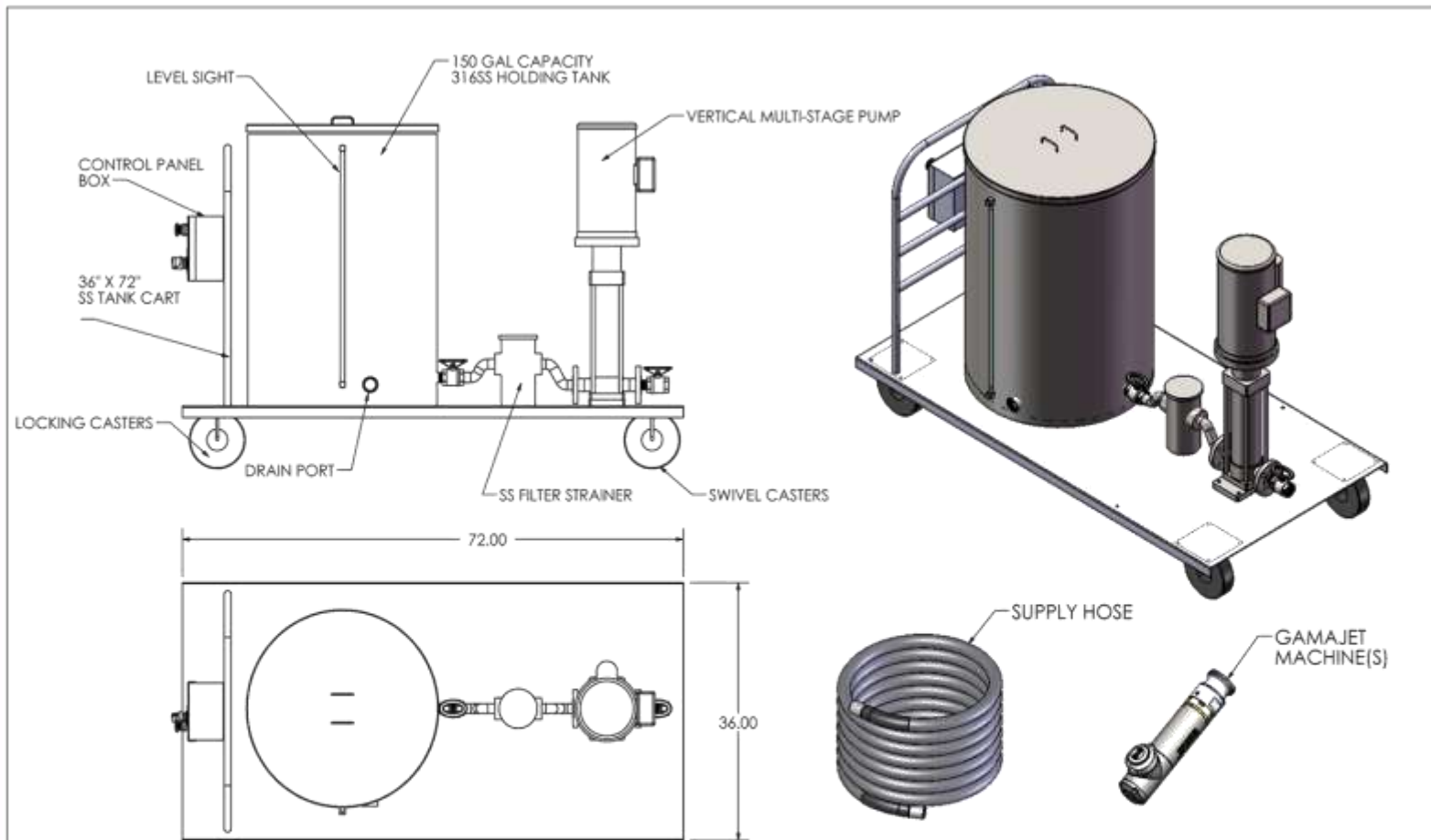
(Diaphragm Pump for Recirculation)



GAMAJET

VM-H MCIP

Vertical Multistage Pump, Holding Tank, Filter, Control Panel and Stainless Steel Cart and Stainless Steel Cart



NOTES:

- SYSTEM DEPICTS PORTABLE TANK CLEANING SYSTEM WITH HOLDING TANK MULTISTAGE PUMP, STRAINER FILTER & CONTROL PANEL
- SYSTEM WILL BE SUPPLIED WITH SUPPLY HOSE & APPROPRIATE GAMAJET MACHINES

THIS DRAWING IS THE PROPERTY OF GAMAJET CLEANING SYSTEMS, INC. REPRODUCTIONS AND USE OTHER THAN BORROWER'S AGREEMENT IS PROHIBITED. THIS DOCUMENT SHALL NOT BE LENT OR DISPOSED OF DIRECTLY OR INDIRECTLY NOR USED FOR ANY PURPOSE OTHER THAN THAT WHICH IS SPECIFICALLY FURNISHED.

DRAWN	DATE	Rev.	Description
SAM	02/08/10	1	New Drawing
SAM	02/23/10	2	UPDATED THE NOTES SECTION

UNLESS OTHERWISE SPECIFIED	
• DIMENSIONS ARE IN INCHES	
• ALL WELDS TO BE TIG	
• GRIND SMOOTH AND SAND	
• NO BURRS, NO SHARP EDGES	
• FILLET RAD.: 0.015	
• TOLERANCES:	
XX ±1/8"	
ANGLE ±3°	
MATERIAL:	316 SS
FINISH (UNLESS OTHERWISE SPECIFIED):	125 Ra
SCALE:	Full

GAMAJET CLEANING SYSTEMS, INC.	
604 Jeffers Circle Exton, PA 19341	
TITLE	PTCS-I
EQUIPMENT	CONCEPT DRAWING
DWG. NO.	PTCS 1001
	SHEET 1 OF 1

GAMAJET[®]

VM-H MCIP

Vertical Multistage Pump, Holding Tank,
Diaphragm Pump for Recirculation, Filter,
Control Panel and Stainless Steel Cart and
Stainless Steel Cart



GAMAJET[®]

VM-H MCIP

Vertical Multistage Pump, Holding Tank,
Filter, Control Panel and Stainless Steel Cart
and Stainless Steel Cart



GAMAJET[®]

VM-H MCIP*

Customized (Air Operated Diaphragm Pumps for Recirculation) with Holding Tank, Filter and Stainless Steel Cart for Explosion Proof Environment.



GAMAJET[®]

VM-H MCIP

Vertical Multistage Pump, Filter, Control Panel, Diaphragm Pump for Recirculation, and Stainless Steel Cart



GAMAJET[®]

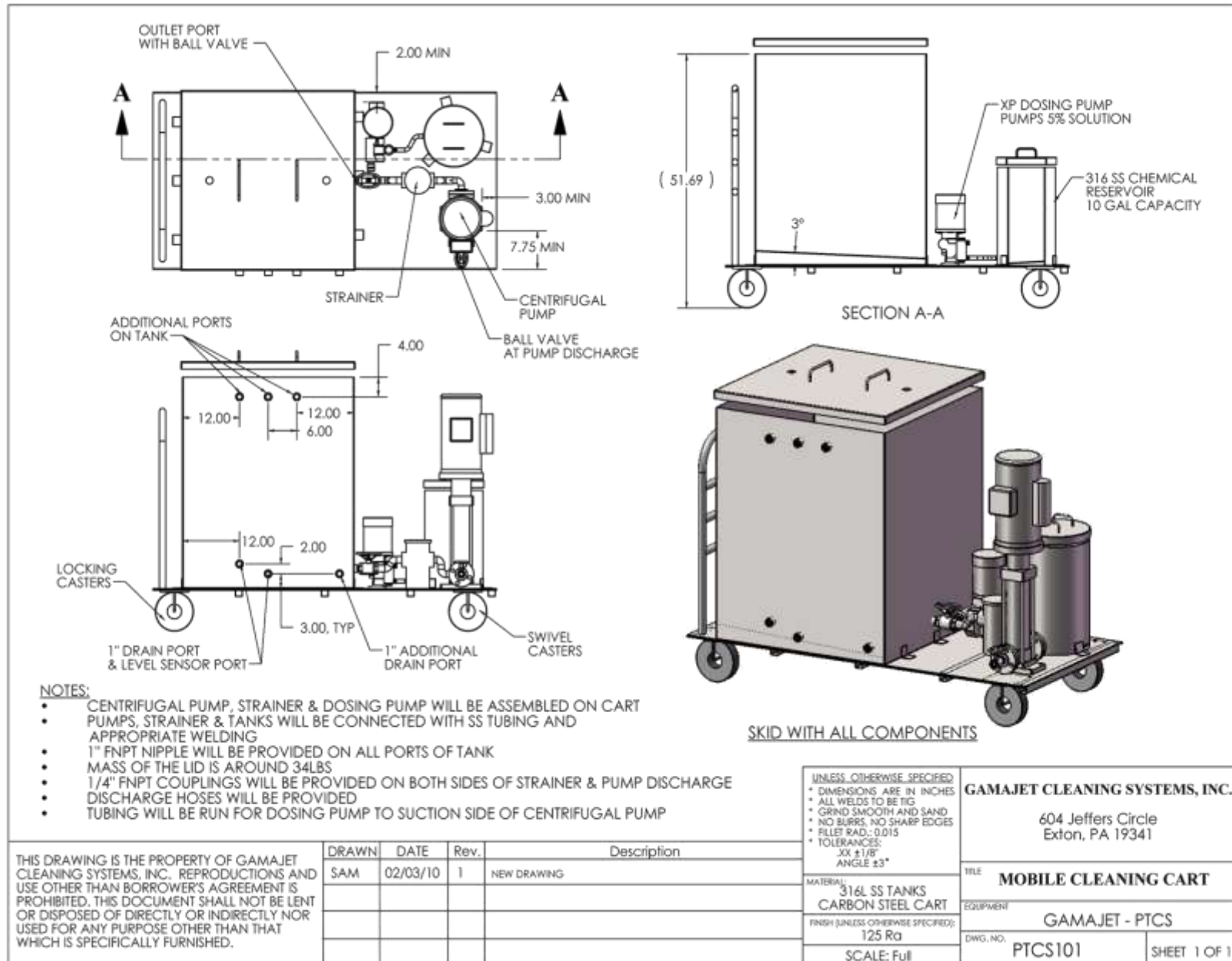
VM-H MCIP

Vertical Multistage Pump, Diaphragm Pump
for Recirculation, Filter, Control Panel and
Stainless Steel Cart and Stainless Steel Cart



VM-DH MCIP

Vertical Multistage Pump, Holding Tank, Dosing Pump with Reservoir, Filter, Control Panel and Stainless Steel Cart and Stainless Steel Cart



GAMAJET[®]

VM-DH MCIP

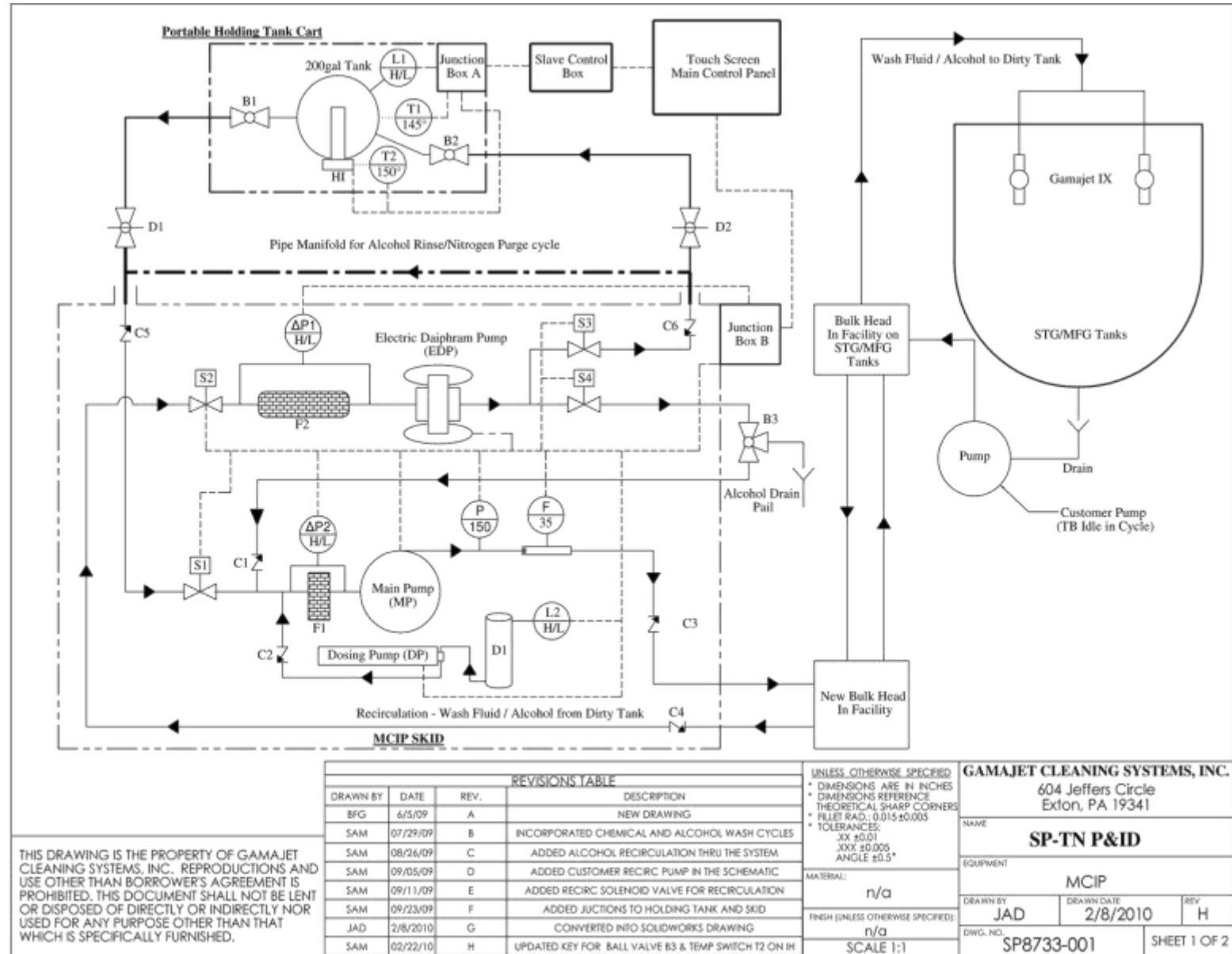
Vertical Multistage Pump, Holding Tank,
Dosing Pump with Reservoir, Filter, Control
Panel and Stainless Steel Cart and Stainless
Steel Cart



OMNI MCIP

Completely Customized, Individually Quoted System

Example: Dual Holding Tanks with Immersion Heaters, Explosion Proof, Re-circulated System, with HMI Touch Screen PLC, Supply Pump, Diaphragm Pump for Recirculation, Dosing Pump with Reservoir, and More.



OMNI MCIP

Completely Customized, Individually Quoted System

Example: Dual Holding Tanks with Immersion Heaters, Explosion Proof, Re-circulated System, with HMI Touch Screen PLC, Supply Pump, Diaphragm Pump for Recirculation, Dosing Pump with Reservoir, and More.



GAMAJET[®]

OMNI MCIP

Completely Customized, Individually Quoted System

Example: Dual Holding Tanks with Immersion Heaters, Explosion Proof, Re-circulated System, with HMI Touch Screen PLC, Supply Pump, Diaphragm Pump for Recirculation, Dosing Pump with Reservoir, and More.



Features to Customize

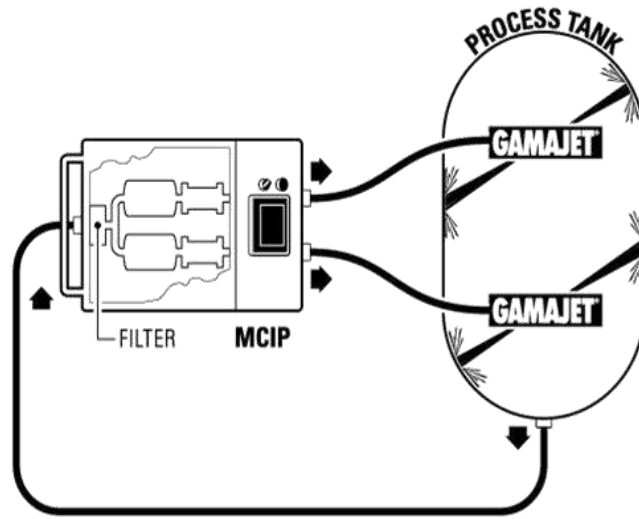
After the Nature of the Application has been discussed and the requirements and parameters formalized we begin the process of customizing your Gamajet model by hand selecting the most efficient and effective tank cleaning solution. As the tank cleaning experts we then make the necessary selections, with you, to create your Gamajet MCIP System.

Components to Customize	Examples
Pump	Vertical Multistage Pump, Sanitary Single Impeller Pump
Filter	Sanitary Y-Strainer, Basket Filter, Cartridge Filter
Recirculation Option	Open or Closed Loop
Control Panel	Touch Screen Customizable PLC, Manual Stop and Start,
Chemical Administration	Venturi, Dosing Pump
Holding Tanks	Jacketed, Stainless Steel (Custom Size and Shape)
Heating	Immersion Heater, Plate Heat Exchanger
Inlet and Outlet Ports	Tri-Clover, Camlock Optional
Hoses	Types and Lengths Based Upon Application

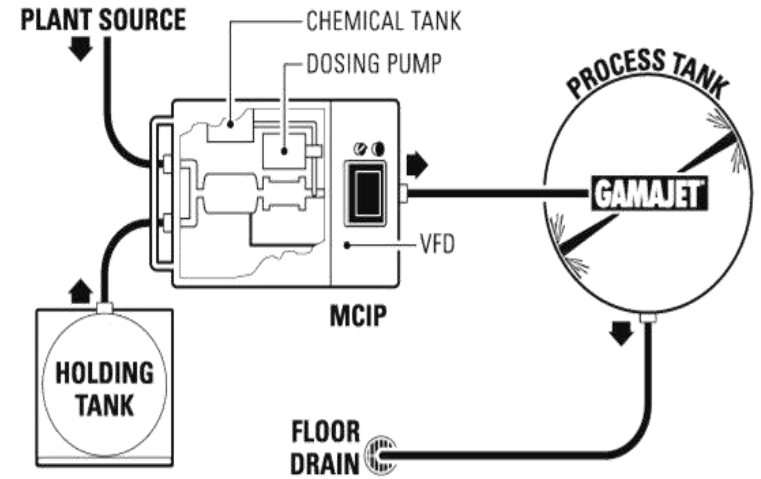
Configurati on

Re-circulation Options: Open or Closed Loop Configuration

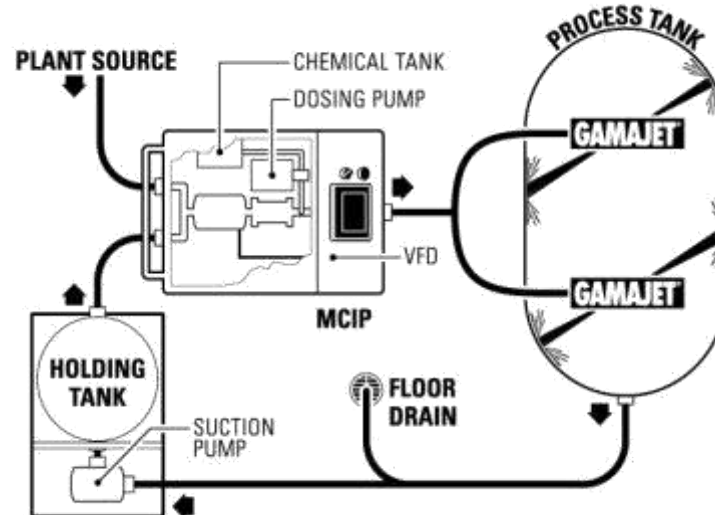
Closed Loop Configuration



Open Loop Configuration



Open or Closed Loop Configuration



Control Panels

Manual Start/Stop with optional timer HMI Touch Screen PLC
LCD Microcontroller- All NEMA Enclosures

Standard Start/Stop



HMI Touch Screen



Standard Start/Stop with Timer



with Customized PLC



Carts

Stainless Steel Flat Carts, Custom Fabricated Carts or Wall Mounted Units

Flat Cart



Wall Mounted Panel



Custom Fabricated Carts



Holding Tanks

We select the most efficient and effective size and shape based on your application and specifications.

Holding Tank with Immersion Heater



GAMAJET®

The World Leader in Tank Cleaning Technology

Gamajet Cleaning Systems, Inc. 604 Jeffers Circle Exton, Pennsylvania 19341

Call 1-877-Gamajet or visit www.Gamajet.com